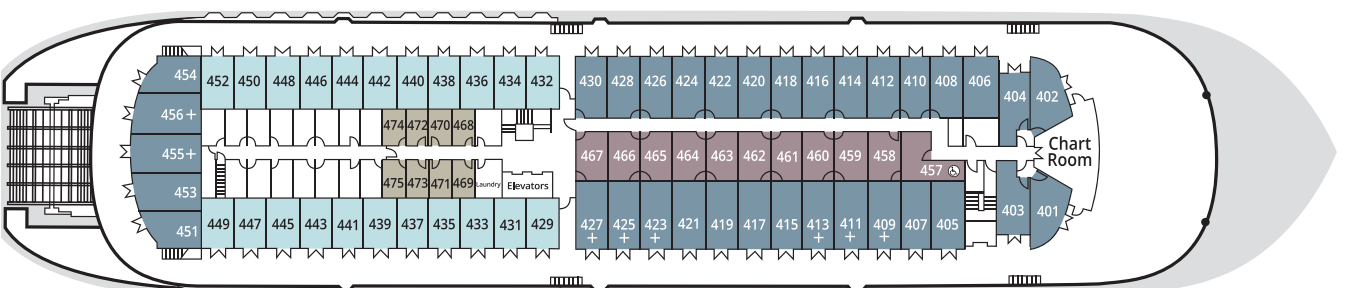
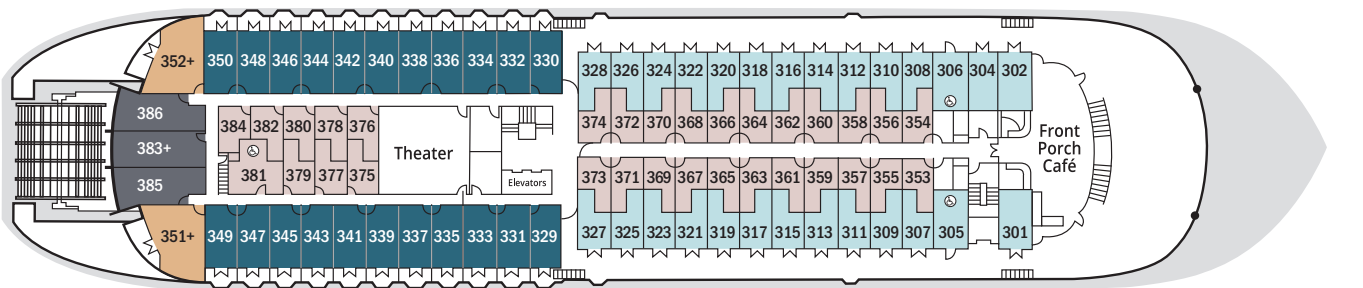
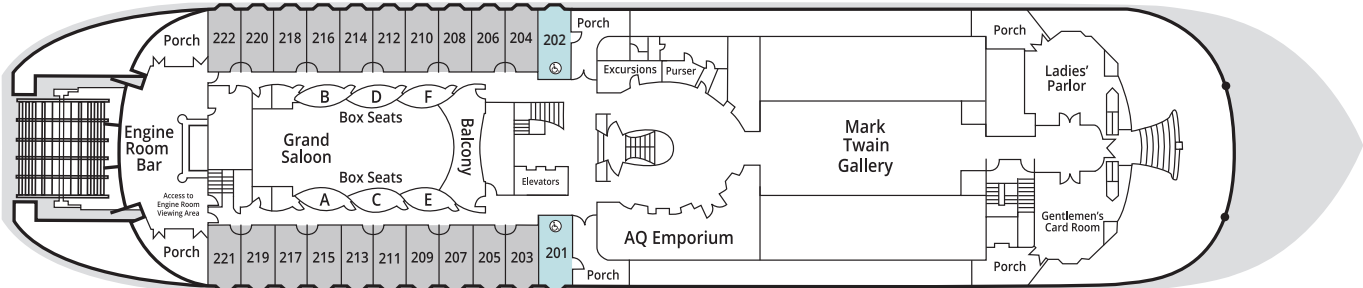
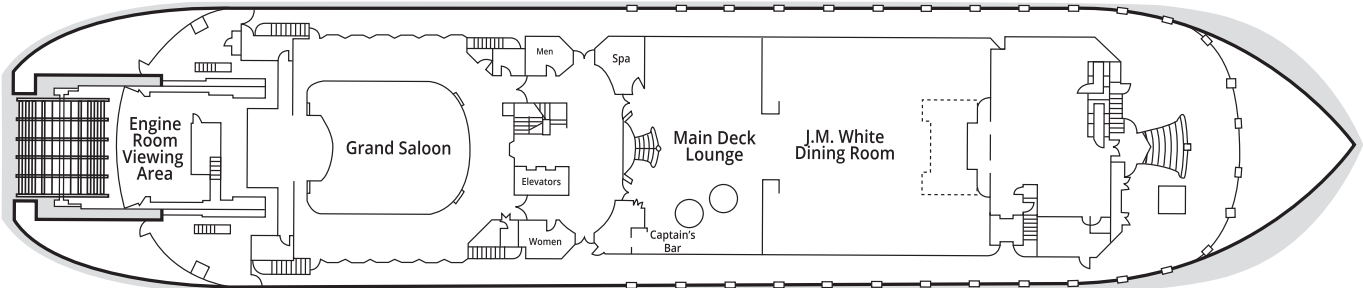


AMERICAN QUEEN®

The largest steamboat ever built, the grand *American Queen* is a gracious and elegant triumph of American ingenuity. Our flagship paddlewheeler is a gentle soul packaged within the ornate detailing that embellishes her exterior. Any traveler who chooses to cruise on this iconic riverboat will soon find that her steady heart beats to the rhythm of music that resounds within her walls. Embark on a river cruise on the *American Queen*, the wondrous steamboat that introduces her guests to the waters that she calls home – the great rivers that have sustained towns, wildlife and memories throughout history.



- DECK 1
MAIN DECK**

Grand Saloon
Main Deck Lounge
Captain's Bar
Spa
J.M. White Dining Room
Engine Room Viewing Area
- DECK 2
CABIN DECK**

Ladies' Parlor
Gentlemen's Card Room
Mark Twain Gallery
Purser's Office
Shore Excursions Desk
AQ Emporium – Gift Shop
Engine Room Bar
Staterooms
- DECK 3
TEXAS DECK**

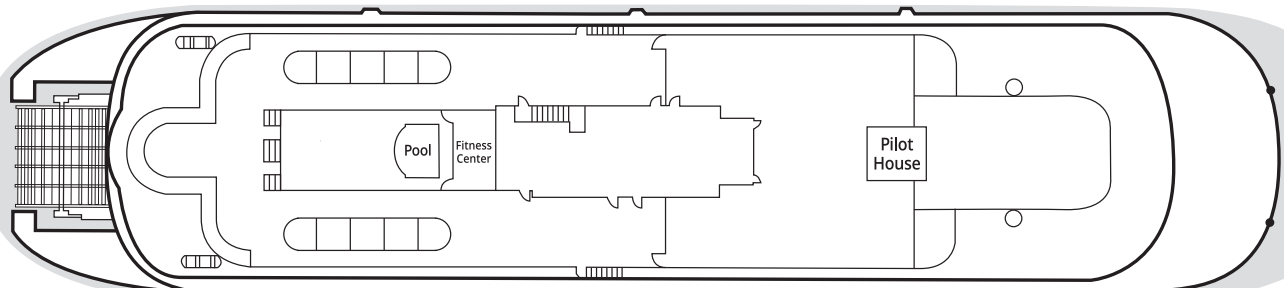
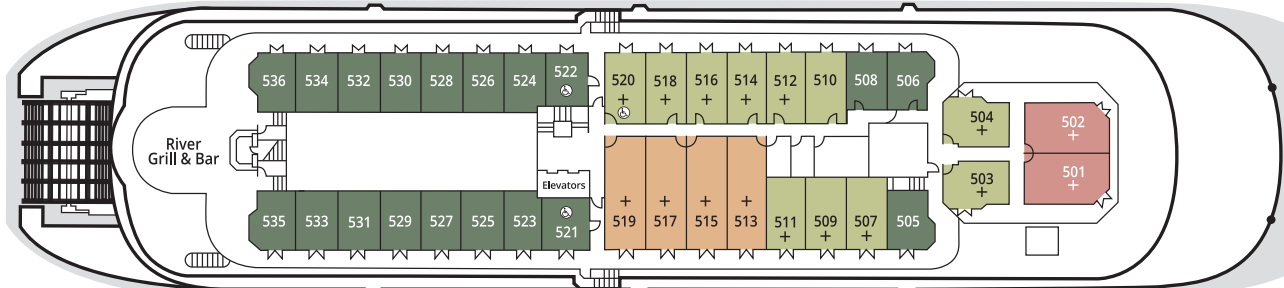
Front Porch Café
Theater
Suites & Staterooms
- DECK 4
OBSERVATION DECK**

Chart Room
Guest Laundry (Mid-Ship)
Staterooms
- DECK 5
PROMENADE DECK**

River Grill & Bar
Suites & Staterooms
- DECK 6
SUN DECK**

Pilot House
Fitness Center
Pool

+ Triple Occupancy



SUITES & STATEROOMS CATEGORIES

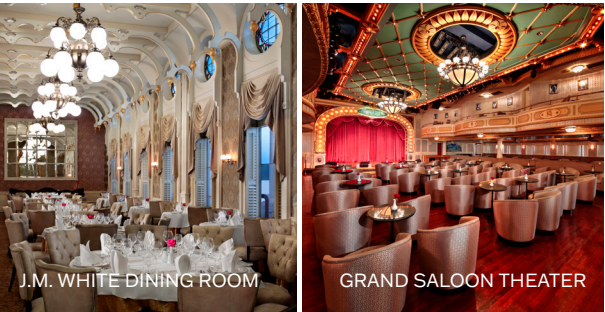
| | | | |
|--|------------------|---|----------------------------|
| OS Owner's Suite with Exclusive Veranda | DECK 5 | B Outside Stateroom with Open Veranda | DECK 4 |
| LS Luxury Suite with Private or Open Veranda | DECK 3 DECK 5 | C Outside Stateroom with Open Veranda | DECK 2 DECK 3 DECK 4 |
| DS Deluxe Suite with Open Veranda | DECK 5 | D Deluxe Outside Stateroom with Bay Window | DECK 2 |
| JS Junior Suite with Open Veranda | DECK 5 | E Inside Stateroom | DECK 3 |
| PS Paddlewheel Stateroom | DECK 3 | SD Single Deluxe Stateroom | DECK 4 |
| A Deluxe Outside Stateroom with Private Veranda | DECK 3 | SI Single Inside Stateroom | DECK 4 |

Ⓐ Accessible / Partially Accessible Suites and Staterooms
Stateroom 381 features a roll-in shower.

Featuring separate entrances with interior connecting doors, category SD staterooms 458 to 467 connect with the adjoining odd-numbered B outside staterooms 409 to 427.

SPECIFICATIONS

| | |
|------------------------|-----------|
| Year built/Refurbished | 1995/2017 |
| Length | 420 Ft. |
| Guest Decks | 6 |
| Suites and Staterooms | 213 |
| Guests | 417 |
| Crew | 172 |



COMMODORE SERVICES® In-suite AMENITIES

Guests holding reservations for select suite-level accommodations will receive our exclusive *Commodore Services*. This elite level of services includes a bottle of wine and a fruit basket upon arrival, preferred dining arrangements, reserved balcony seating at the nightly shows and an invitation to dine with senior officers of the boat.

**Inclusions vary by vessel.*

ADDITIONAL AMENITIES

- Pre-boarding privileges
 - Packing and unpacking of luggage
 - Shoe shine
 - Laundry and pressing service
- Afternoon tea served in room
 - Pre-dinner canapes
 - Reserved theater seating

OWNER'S SUITE WITH EXCLUSIVE VERANDA | 348 SQ. FT.



- Queen bed
- Full bathroom with standard tub/shower combination
- Sitting area with sofa-bed
- Dressing area with granite vanity and mirror
- Flat-screen TV
- Safe, Bathrobes and Slippers

- Coffee maker and mini refrigerator
- French doors open to exclusive veranda
- Furnished patio with sofa, two chairs and a coffee table
- Exterior access
- Located on Promenade Deck
- Commodore Services, including a River Butler



OS

LUXURY SUITE WITH PRIVATE OR OPEN VERANDA | 345-420 SQ. FT.



- Queen bed or two single beds
- Full bathroom with tub and shower or standard tub/shower combination
- Sitting area with sofa-bed
- Vanity, mirror and desk
- Flat-screen TV
- Safe, Bathrobes and Slippers

- Coffee maker and mini refrigerator
- French doors open to deck or veranda
- Interior and/or exterior access
- Located on Promenade and Texas Decks
- Commodore Services, including a River Butler



LS

DELUXE SUITE WITH OPEN VERANDA | 260 SQ. FT.



- Queen bed or two single beds
- Full bathroom with standard tub/shower combination
- Sitting area
- Vanity and mirror
- Flat-screen TV
- Safe, Bathrobes and Slippers

- French doors open to deck
 - Interior and/or exterior access
 - Located on Promenade Deck
 - Commodore Services (excludes River Butler)
- Partially accessible suite 520 is 275 sq. ft. and features a standard tub/shower combination.*



DS

JUNIOR SUITE WITH OPEN VERANDA | 145-230 SQ. FT.



- Queen bed or two single beds
- Full bathroom with standard tub/shower combination
- Flat-screen TV
- Safe, Bathrobes and Slippers
- Sitting area
- Vanity and mirror

- French doors open to deck
- Interior and/or exterior access
- Located on Promenade and Observation Decks

Partially accessible suites 521 and 522 are 230 sq. ft. and feature a standard tub/shower combination.

JS

PADDLEWHEEL STATEROOM | 265-320 SQ. FT.



- Stateroom 383: 320 sq. ft.
- Stateroom 385 and 386: 265 sq. ft.
- Traditional paddlewheel experience
- Queen bed or two single beds
- Full bathroom with standard tub/shower combination
- Flat-screen TV

- Safe, Bathrobes and Slippers
- Sitting area
- 6-foot-square picture window overlooking the paddlewheel
- Vanity, mirror and desk
- Interior access
- Located on Texas Deck

PS

DELUXE OUTSIDE STATEROOM WITH PRIVATE VERANDA | 190 SQ. FT.



- Queen bed or two single beds
- Full bathroom with standard tub/shower combination
- Flat-screen TV

- Safe, Bathrobes and Slippers
- French doors open to private veranda
- Interior access
- Located on Texas Deck

A

OUTSIDE STATEROOM WITH OPEN VERANDA | 160-230 SQ. FT.

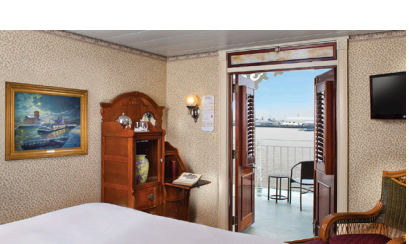


- Queen bed or two single beds
- Full bathroom with standard tub/shower combination
- Flat-screen TV

- French doors open to deck
- Interior and/or exterior access
- Located on Observation Deck

B

OUTSIDE STATEROOM WITH OPEN VERANDA | 140-180 SQ. FT.



- Queen bed or two single beds
- Full bathroom with shower or standard tub/shower combination
- Flat-screen TV
- French doors open to deck

- Exterior access
- Located on Observation, Texas and Cabin Decks

Partially accessible staterooms 305 and 306 (180 sq. ft.) feature standard tub/shower combinations.

C

DELUXE OUTSIDE STATEROOM WITH BAY WINDOW | 190 SQ. FT.

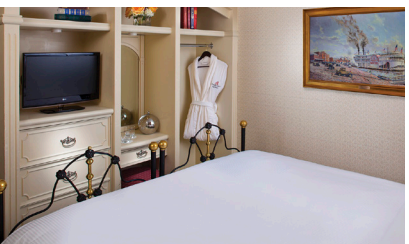


- Queen bed or two single beds
- Full bathroom with standard tub/shower combination
- Flat-screen TV

- Interior access
- Located on Cabin Deck

D

SINGLE DELUXE STATEROOM | 130 SQ. FT.



- Queen bed
- Full bathroom with shower
- Flat-screen TV
- Interior access

- Located on Observation Deck
- Partially accessible stateroom 457 is 175 sq. ft. and features a standard tub/shower combination and twin beds.*

SD

INSIDE STATEROOM | 130 SQ. FT.



- Queen bed or two single beds
- Full bathroom with shower
- Flat-screen TV
- Interior access

- Located on Texas Deck
- Accessible stateroom 381 is 217 sq. ft. and features a roll-in shower.*

E

SINGLE INSIDE STATEROOM | 80 SQ. FT.



- Single bed
- Full bathroom with shower
- Flat-screen TV

- Interior access
- Located on Observation Deck

SI