



EMERALD CRUISES

## **Emerald Star Ships**

*Astra · Dawn · Destiny · Luna · Radiance · Sky · Star*

### **LUXURY EUROPEAN RIVER CRUISES**

Built to navigate the naturally beautiful European Rivers, Emerald Star Ships welcome 180\* guests. Each generously proportioned river-view suite and stateroom is designed with your comfort in mind and includes majestic scenic views from every room. Enjoy innovative features like a heated pool with a retractable roof that seamlessly transforms into a cinema at night. Relax on the paradisaal Sun Deck or socialize at the Horizon Bar & Lounge as skilled mixologists craft you a refreshing drink. Acquire a taste for fine dining at the sophisticated Reflections Restaurant and enjoy specially curated dishes prepared from ingredients from the surrounding regions.

### **INCLUSIONS**

- Pre-Paid Onboard & Onshore Gratuities
- Immersive Dining Experiences inspired by the local region
- Complimentary wine, beer and soft drinks with lunch and dinner
- Port Taxes & Fees
- An excursion almost every day
- Wi-Fi on board

### **DISTINCTIONS**

- Heated pool transforms into a cinema in the evening\*
- Wellness facilities include a spa and fitness equipment
- EmeraldPLUS immersive experiences, and EmeraldACTIVE guided hikes, bike rides, and other active outings
- DiscoverMORE in-depth excursions at additional cost
- Enjoy the best views of the river from this spacious Sun Deck



*\*Availability of features and guest size varies on Emerald Radiance*



# Emerald Sky & Emerald Star Deck Plans

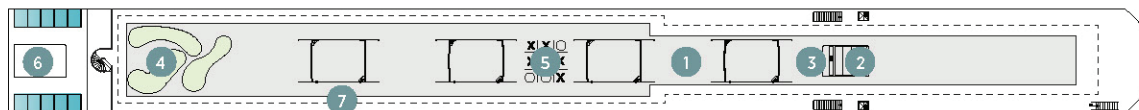
Danube, Rhine, Main & Moselle Rivers

Built: 2014 • Length: 443 ft. (135 m.) • Guests: 180 Staterooms: 91 • Crew Members: 52

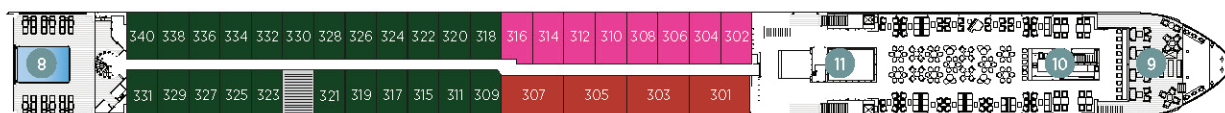
**EMERALD<sup>®</sup>**  
CRUISES



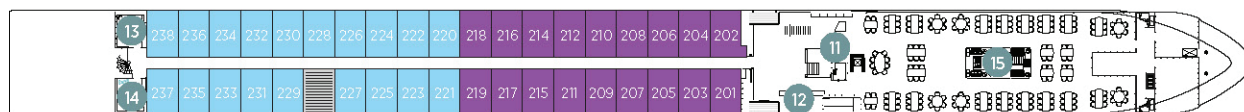
Sun Deck



Horizon Deck



Vista Deck



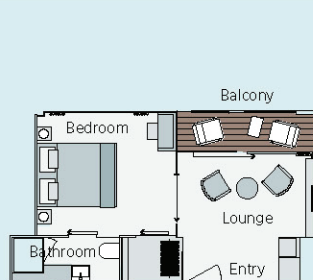
Riviera Deck



- 1 Sun Deck with Deck Chairs^
- 2 Navigation Bridge
- 3 Sky Barbecue
- 4 Golf Putting Green
- 5 Games Area
- 6 Retractable Glass Roof
- 7 Walking Track
- 8 Daytime Pool & Bar/Evening Cinema
- 9 The Terrace
- 10 Horizon Bar & Lounge
- 11 Elevator
- 12 Reception
- 13 Wellness Area
- 14 Fitness Area
- 15 Reflections Restaurant

## Stateroom Categories

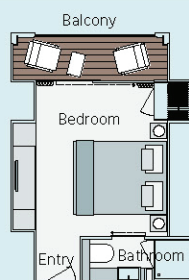
CAT	Horizon Deck	QTY	Size	CAT	Riviera Deck	QTY	Size
SA	Owner's One-Bedroom Suite	4	315 sq. ft. (29 sq. m.)	D	Emerald Stateroom	8	162 sq. ft. (15 sq. m.)
S	Grand Balcony Suite*	8	210 sq. ft. (20 sq. m.)	E	Emerald Stateroom	9	162 sq. ft. (15 sq. m.)
A	Emerald Panorama Balcony Suite	23	180 sq. ft. (17 sq. m.)	ES	Emerald Single Stateroom	2	117 sq. ft. (11 sq. m.)
CAT	Vista Deck	QTY	Size				
B	Emerald Panorama Balcony Suite	18	180 sq. ft. (17 sq. m.)				
C	Emerald Panorama Balcony Suite	19	180 sq. ft. (17 sq. m.)				



Owner's One-Bedroom Suite

315 sq. ft. (29 sq. m.)

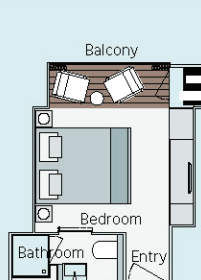
**CAT SA**



Grand Balcony Suite

210 sq. ft. (20 sq. m.)

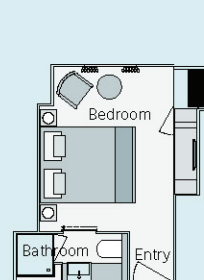
**CAT S**



Emerald Panorama Balcony Suite

180 sq. ft. (17 sq. m.)

**CAT A CAT B CAT C**



Emerald Stateroom

162 sq. ft. (15 sq. m.)

**CAT D CAT E**



Emerald Single Stateroom

117 sq. ft. (11 sq. m.)

**CAT ES**

**Important Information:** On Emerald Sky and Emerald Star, stateroom 202 has modified entry, bathroom configuration with personal assistance fittings and has no decked area with table and chairs. The stateroom and deck plans, sizes and photographs are an indication only and are subject to variation.

^Due to safety, the Sun Deck will be closed when traveling under low bridges.

\*Stateroom 316 has a slightly varied layout. EC-240105 - February 6, 2025

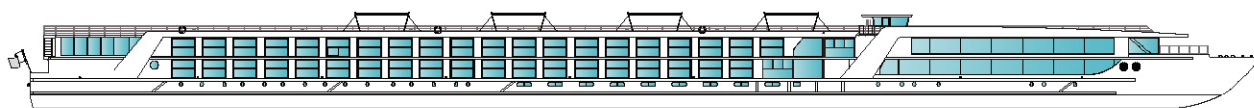


# Emerald Dawn, Emerald Sun & Emerald Luna Deck Plans

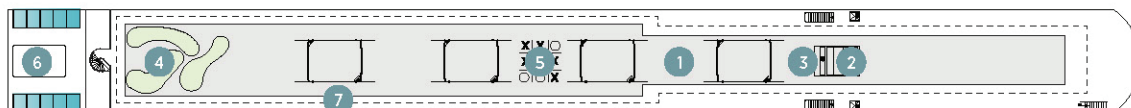
Danube, Rhine, Main & Moselle Rivers

Built: 2015 & 2020 • Length: 443 ft. (135 m.) • Guests: 180 • Staterooms: 91 • Crew Members: 52

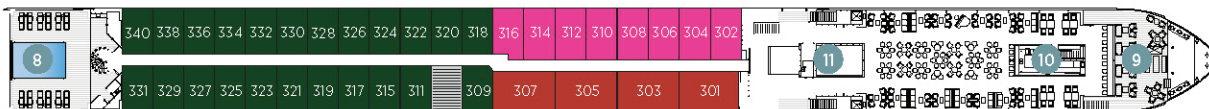
**EMERALD<sup>Y</sup>**  
CRUISES



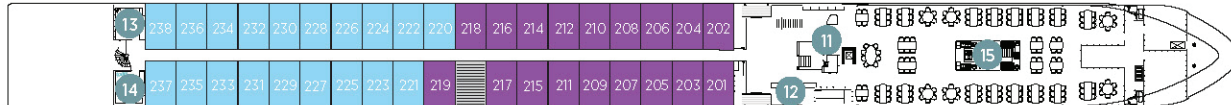
Sun Deck



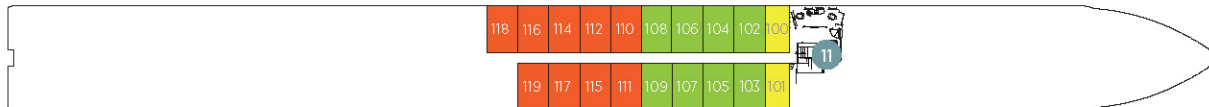
Horizon Deck



Vista Deck



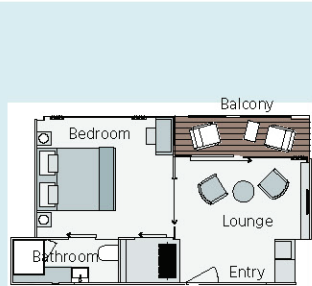
Riviera Deck



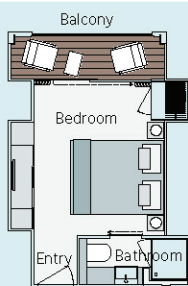
- 1 Sun Deck with Deck Chairs^
- 2 Navigation Bridge
- 3 Sky Barbecue
- 4 Golf Putting Green
- 5 Games Area
- 6 Retractable Glass Roof
- 7 Walking Track
- 8 Daytime Pool & Bar/Evening Cinema
- 9 The Terrace
- 10 Horizon Bar & Lounge
- 11 Elevator
- 12 Reception
- 13 Wellness Area
- 14 Fitness Area
- 15 Reflections Restaurant

## Stateroom Categories

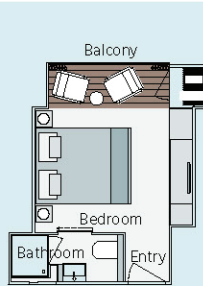
CAT	Horizon Deck	QTY	Size	CAT	Riviera Deck	QTY	Size
SA	Owner's One-Bedroom Suite	4	315 sq. ft. (29 sq. m.)	D	Emerald Stateroom	8	162 sq. ft. (15 sq. m.)
S	Grand Balcony Suite*	8	210 sq. ft. (20 sq. m.)	E	Emerald Stateroom	9	162 sq. ft. (15 sq. m.)
A	Emerald Panorama Balcony Suite	23	180 sq. ft. (17 sq. m.)	ES	Emerald Single Stateroom	2	117 sq. ft. (11 sq. m.)
CAT	Vista Deck	QTY	Size				
B	Emerald Panorama Balcony Suite	18	180 sq. ft. (17 sq. m.)				
C	Emerald Panorama Balcony Suite	19	180 sq. ft. (17 sq. m.)				



Owner's One-Bedroom Suite  
315 sq. ft. (29 sq. m.)  
**CAT SA**



Grand Balcony Suite  
210 sq. ft. (20 sq. m.)  
**CAT S**



Emerald Panorama Balcony Suite  
180 sq. ft. (17 sq. m.)  
**CAT A CAT B CAT C**



Emerald Stateroom  
162 sq. ft. (15 sq. m.)  
**CAT D CAT E**



Emerald Single Stateroom  
117 sq. ft. (11 sq. m.)  
**CAT ES**

**Important Information:** The stateroom and deck plans, sizes and photographs are an indication only and are subject to variation.

\*Due to safety, the Sun Deck will be closed when traveling under low bridges.

\*Stateroom 316 has a slightly varied layout. EC-240105 - February 6, 2025

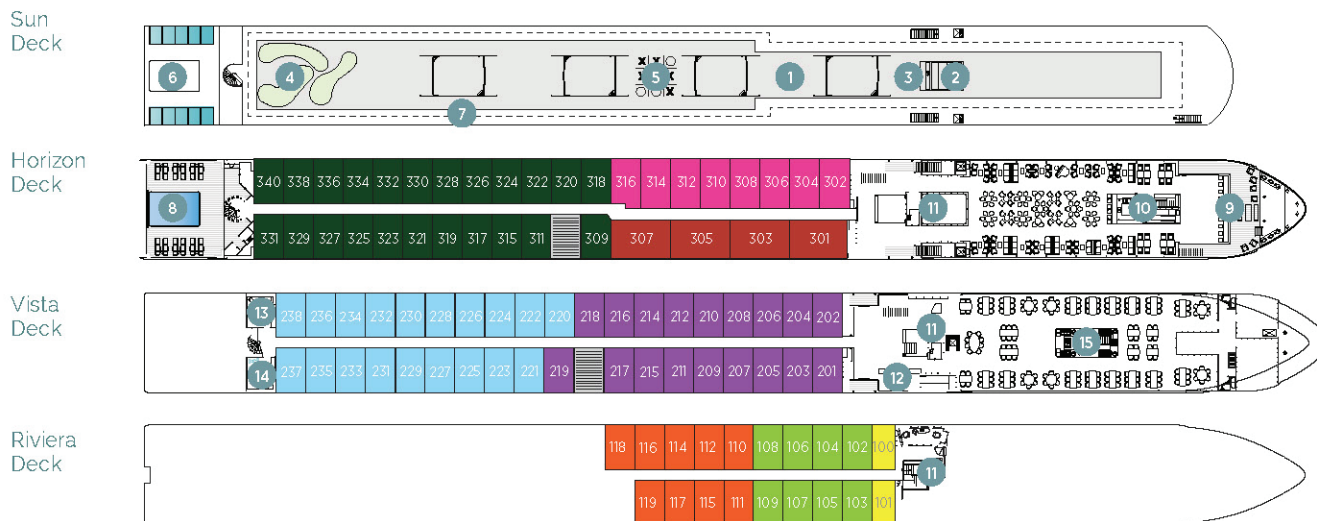
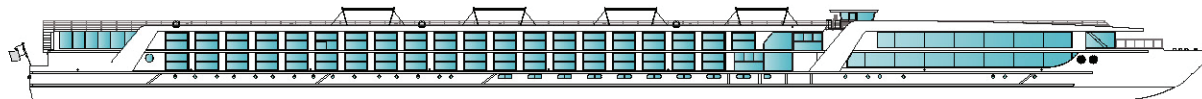


# Emerald Destiny Deck Plans

Danube, Rhine & Main Rivers

Built: 2017 • Length: 443 ft. (135 m.) • Guests: 180 • Staterooms: 91 • Crew Members: 52

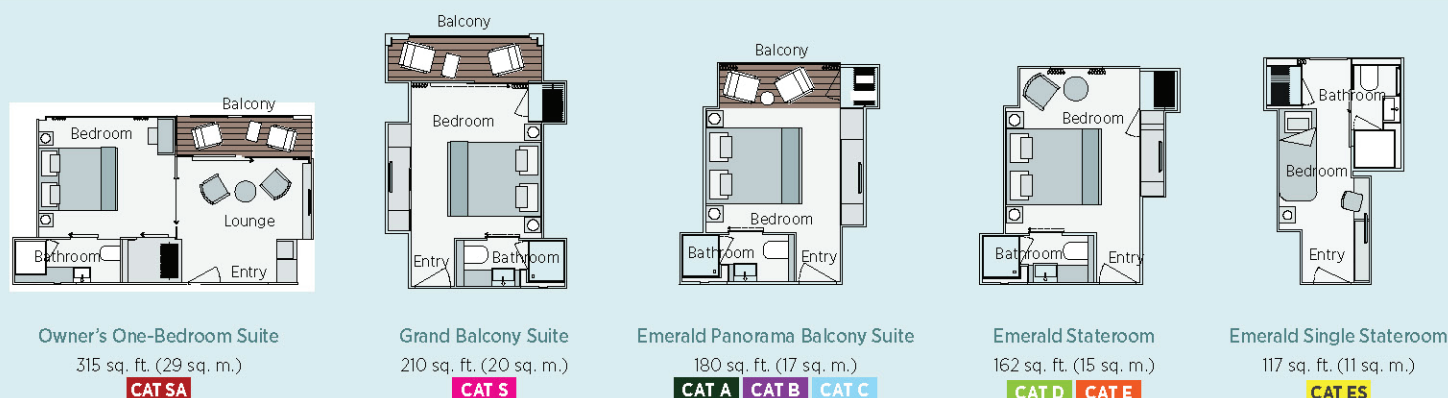
**EMERALD**<sup>®</sup>  
CRUISES



- 1 Sun Deck with Deck Chairs^
- 2 Navigation Bridge
- 3 Sky Barbecue
- 4 Golf Putting Green
- 5 Games Area
- 6 Retractable Glass Roof
- 7 Walking Track
- 8 Daytime Pool & Bar/Evening Cinema
- 9 The Terrace
- 10 Horizon Bar & Lounge
- 11 Elevator
- 12 Reception
- 13 Wellness Area
- 14 Fitness Area
- 15 Reflections Restaurant

## Stateroom Categories

CAT	Horizon Deck	QTY	Size	CAT	Riviera Deck	QTY	Size
SA	Owner's One-Bedroom Suite	4	315 sq. ft. (29 sq. m.)	D	Emerald Stateroom	8	162 sq. ft. (15 sq. m.)
S	Grand Balcony Suite*	8	210 sq. ft. (20 sq. m.)	E	Emerald Stateroom	9	162 sq. ft. (15 sq. m.)
A	Emerald Panorama Balcony Suite	23	180 sq. ft. (17 sq. m.)	ES	Emerald Single Stateroom	2	117 sq. ft. (11 sq. m.)
CAT	Vista Deck	QTY	Size				
B	Emerald Panorama Balcony Suite	18	180 sq. ft. (17 sq. m.)				
C	Emerald Panorama Balcony Suite	19	180 sq. ft. (17 sq. m.)				



**Important Information:** The stateroom and deck plans, sizes and photographs are an indication only and are subject to variation.

^Due to safety, the Sun Deck will be closed when traveling under low bridges.

\*Stateroom 308 has a slightly varied layout. EC-240105 - February 6, 2025

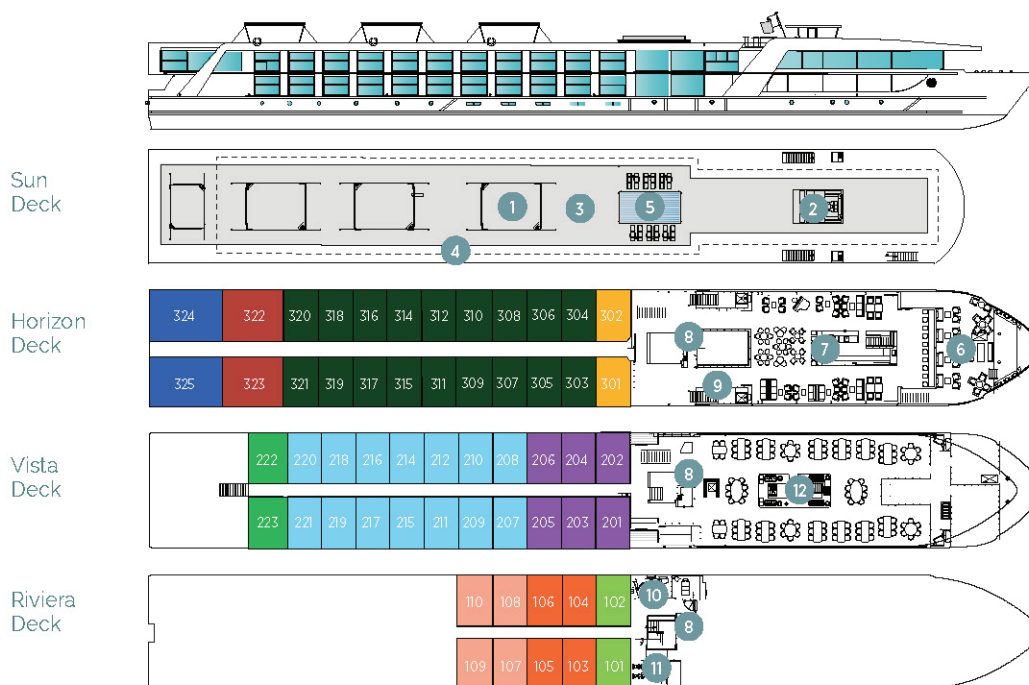


# Emerald Radiance Deck Plans

Douro River

Built: 2017 • Length: 292 ft (89 m.) • Guests: 112 • Staterooms: 56 • Crew Members: 37

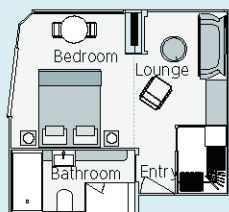
**EMERALD**<sup>®</sup>  
CRUISES



- 1 Sun Deck with Deck Chairs\*
- 2 Navigation Bridge
- 3 Sky Barbecue
- 4 Golf Putting Green
- 5 Games Area
- 6 Retractable Glass Roof
- 7 Walking Track
- 8 Daytime Pool & Bar/Evening Cinema
- 9 The Terrace
- 10 Horizon Bar & Lounge
- 11 Elevator
- 12 Reception

## Stateroom Categories

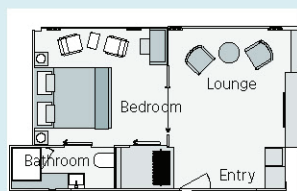
CAT	Horizon Deck	QTY	Size	CAT	Riviera Deck	QTY	Size
RA	Emerald Riverview Suite	2	300 sq. ft. (28 sq. m.)	D	Emerald Stateroom	2	170 sq. ft. (16 sq. m.)
SA	Owner's One-Bedroom Suite	2	285 sq. ft. (26 sq. m.)	E	Emerald Stateroom	4	160 sq. ft. (15 sq. m.)
P	Emerald Panorama Balcony Suite	2	170 sq. ft. (16 sq. m.)	F	Emerald Stateroom	4	153 sq. ft. (14 sq. m.)
A	Emerald Panorama Balcony Suite	18	160 sq. ft. (15 sq. m.)				
CAT	Vista Deck	QTY	Size				
R	Emerald Panorama Balcony Suite	2	188 sq. ft. (17 sq. m.)				
B	Emerald Panorama Balcony Suite	6	160 sq. ft. (15 sq. m.)				
C	Emerald Panorama Balcony Suite	14	160 sq. ft. (15 sq. m.)				



**Emerald Riverview Suite**

300 sq. ft. (28 sq. m.)

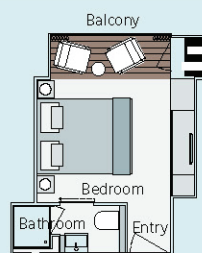
**CAT RA**



**Owner's One-Bedroom Suite**

285 sq. ft. (26 sq. m.)

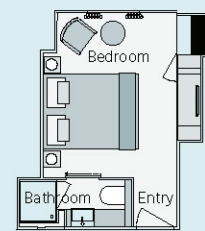
**CAT SA**



**Emerald Panorama Balcony Suite**

188 sq. ft. (17 sq. m.) - 160 sq. ft. (15 sq. m.)

**CAT P CAT A CAT R CAT B CAT C**



**Emerald Stateroom**

153 sq. ft. (14 sq. m.) - 170 sq. ft. (16 sq. m.)

**CAT D CAT E CAT F**

**Important Information:** The stateroom and deck plans, sizes and photographs are an indication only and are subject to variation.

\*Due to safety, the Sun Deck will be closed when traveling under low bridges. EC-240105 - February 6, 2025





# EMERALD

C R U I S E S

IN PARTNERSHIP WITH  **go**next



View departures on  
Emerald Cruises with  
Go Next